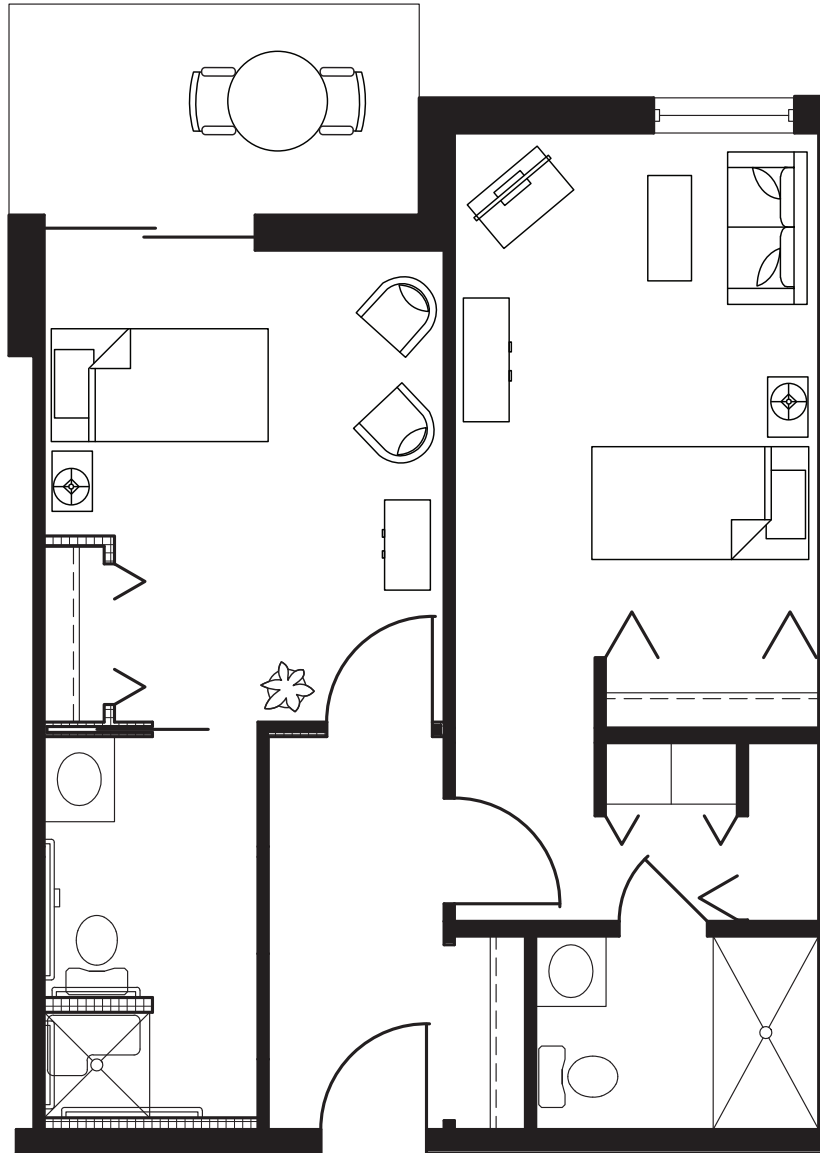


The Occoquan

Junior Studio • Shown With Furniture

(Two studios shown, each with a private bath and a shared entry space.)

Approximately 291 to 348 Square Feet



ASSISTED LIVING AND MEMORY CARE

Hometown Senior Living for Over 30 Years

703-494-3817 • PotomacPlace.com

2133 Montgomery Avenue • Woodbridge, VA

 A Family Company



Coordinated Services Management, Inc. Professional Management of Retirement Communities since 1981.

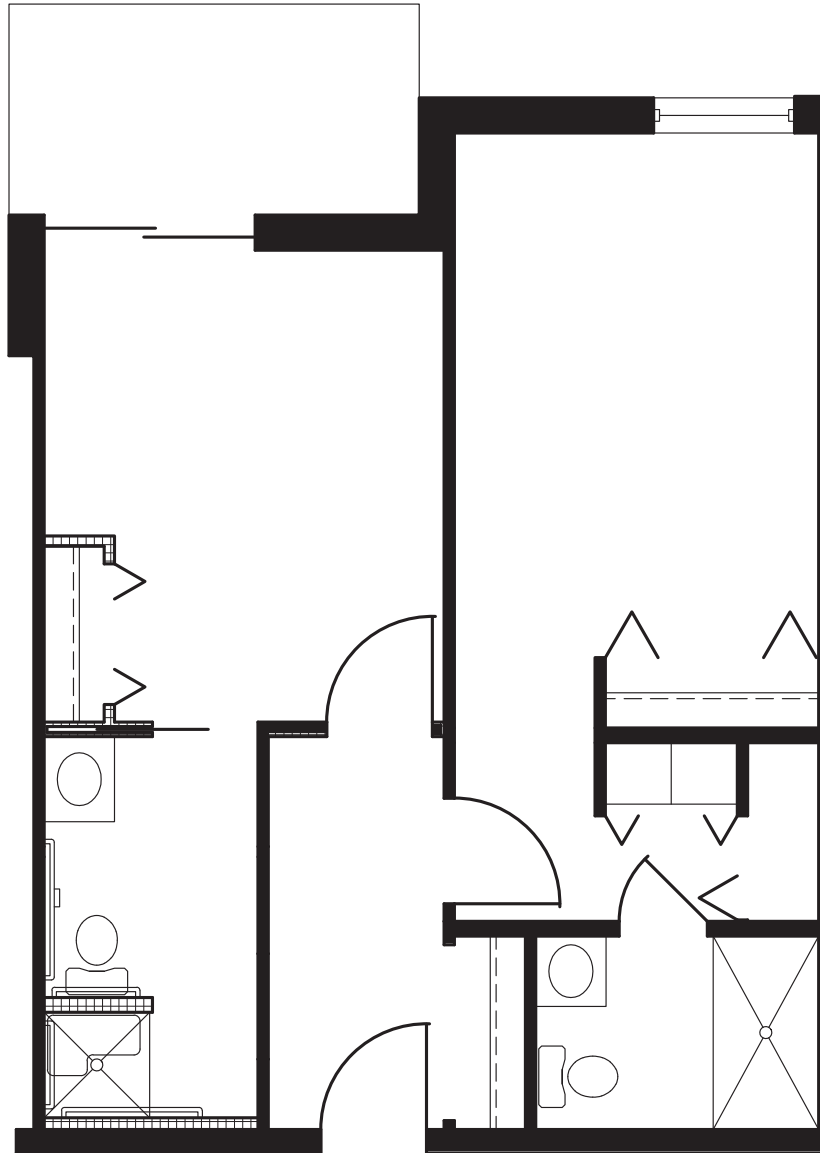


The Occoquan

Junior Studio • Shown Without Furniture

(Two studios shown, each with a private bath and a shared entry space.)

Approximately 291 to 348 Square Feet



ASSISTED LIVING AND MEMORY CARE

Hometown Senior Living for Over 30 Years

703-494-3817 • PotomacPlace.com

2133 Montgomery Avenue • Woodbridge, VA

 A Family Company

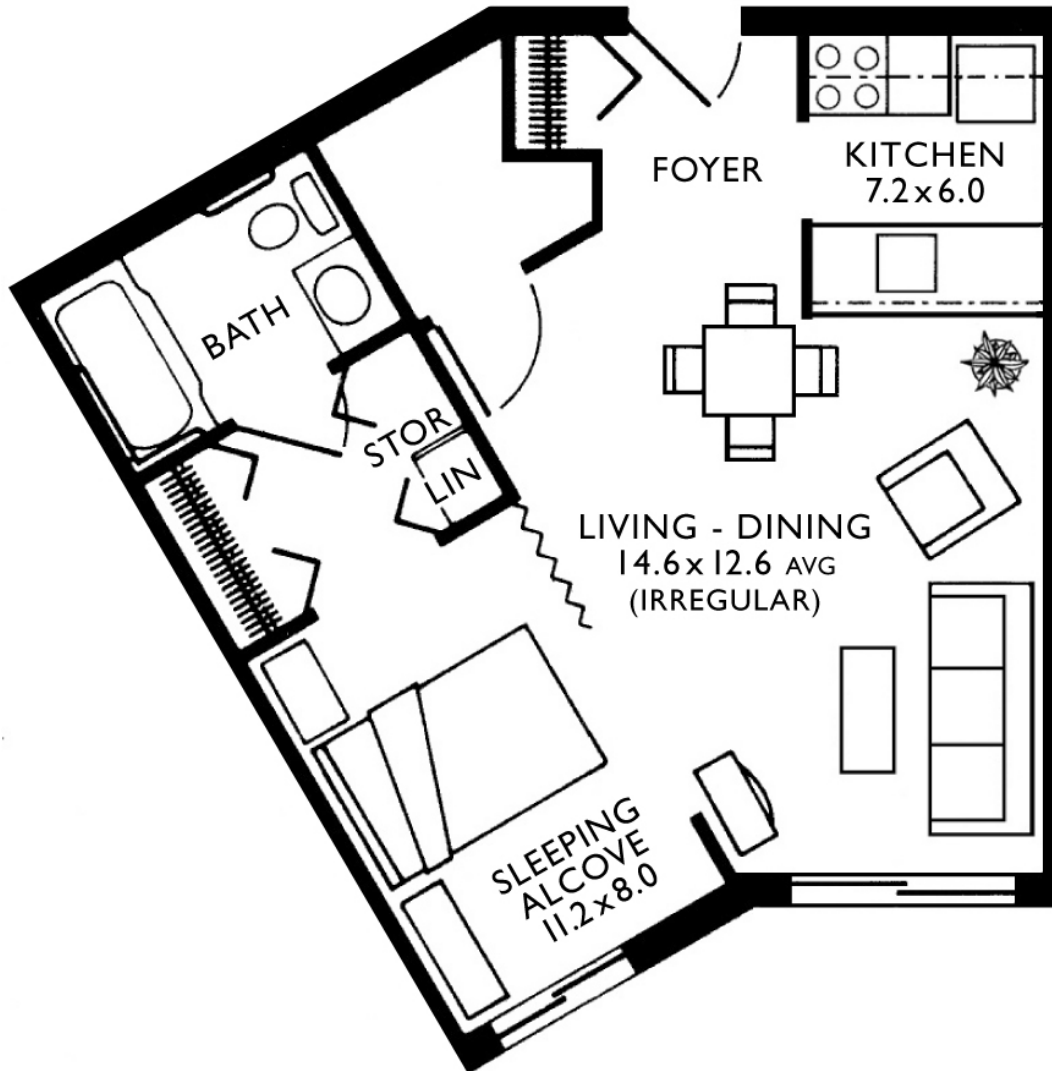


Coordinated Services Management, Inc. Professional Management of Retirement Communities since 1981.



The Shenandoah

Studio C • Shown With Furniture
Approximately 486 Square Feet



ASSISTED LIVING AND MEMORY CARE

Hometown Senior Living for Over 30 Years

703-494-3817 • PotomacPlace.com

2133 Montgomery Avenue • Woodbridge, VA

 A Family Company

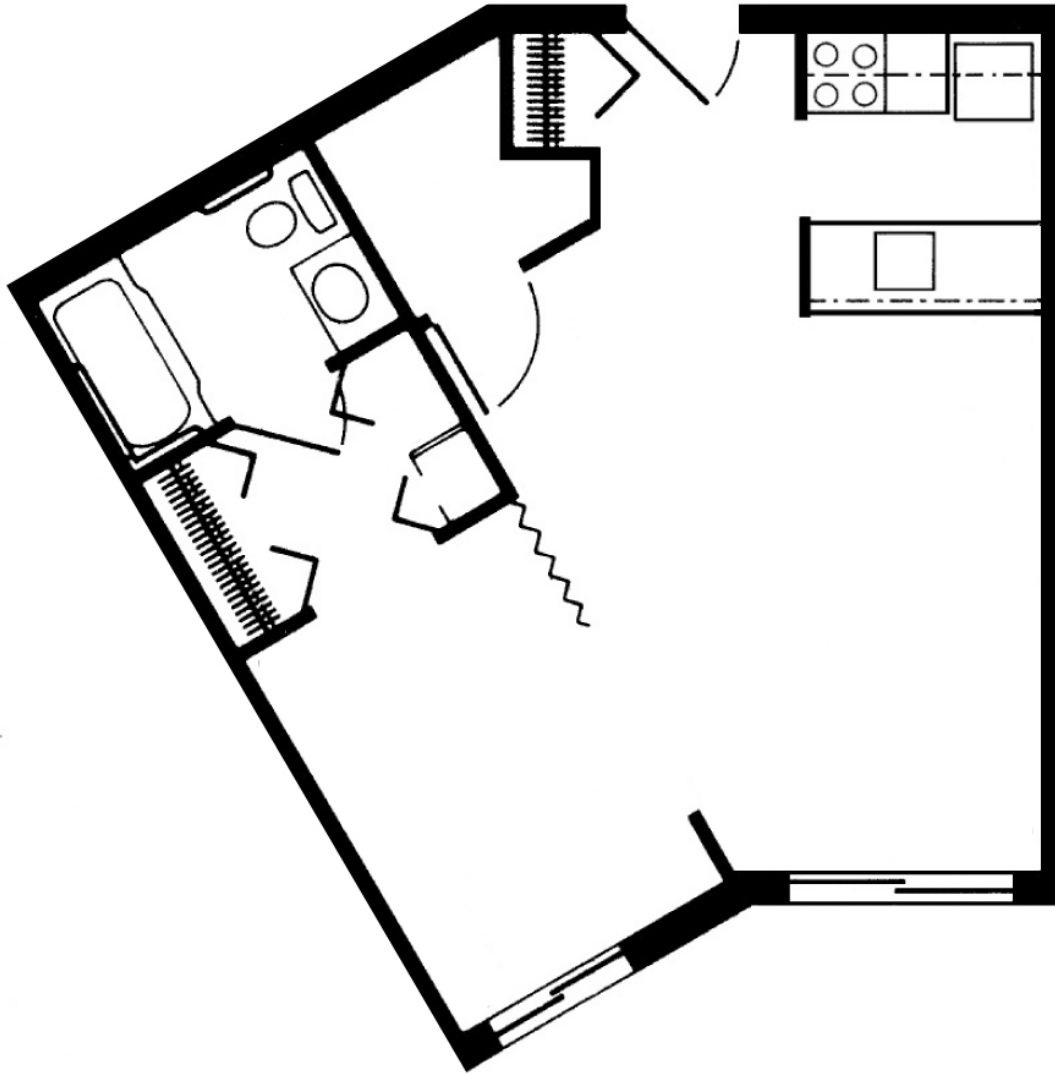


Coordinated Services Management, Inc. Professional Management of Retirement Communities since 1981.



The Shenandoah

Studio C • Shown Without Furniture
Approximately 486 Square Feet



ASSISTED LIVING AND MEMORY CARE

Hometown Senior Living for Over 30 Years

703-494-3817 • PotomacPlace.com

2133 Montgomery Avenue • Woodbridge, VA

 A Family Company

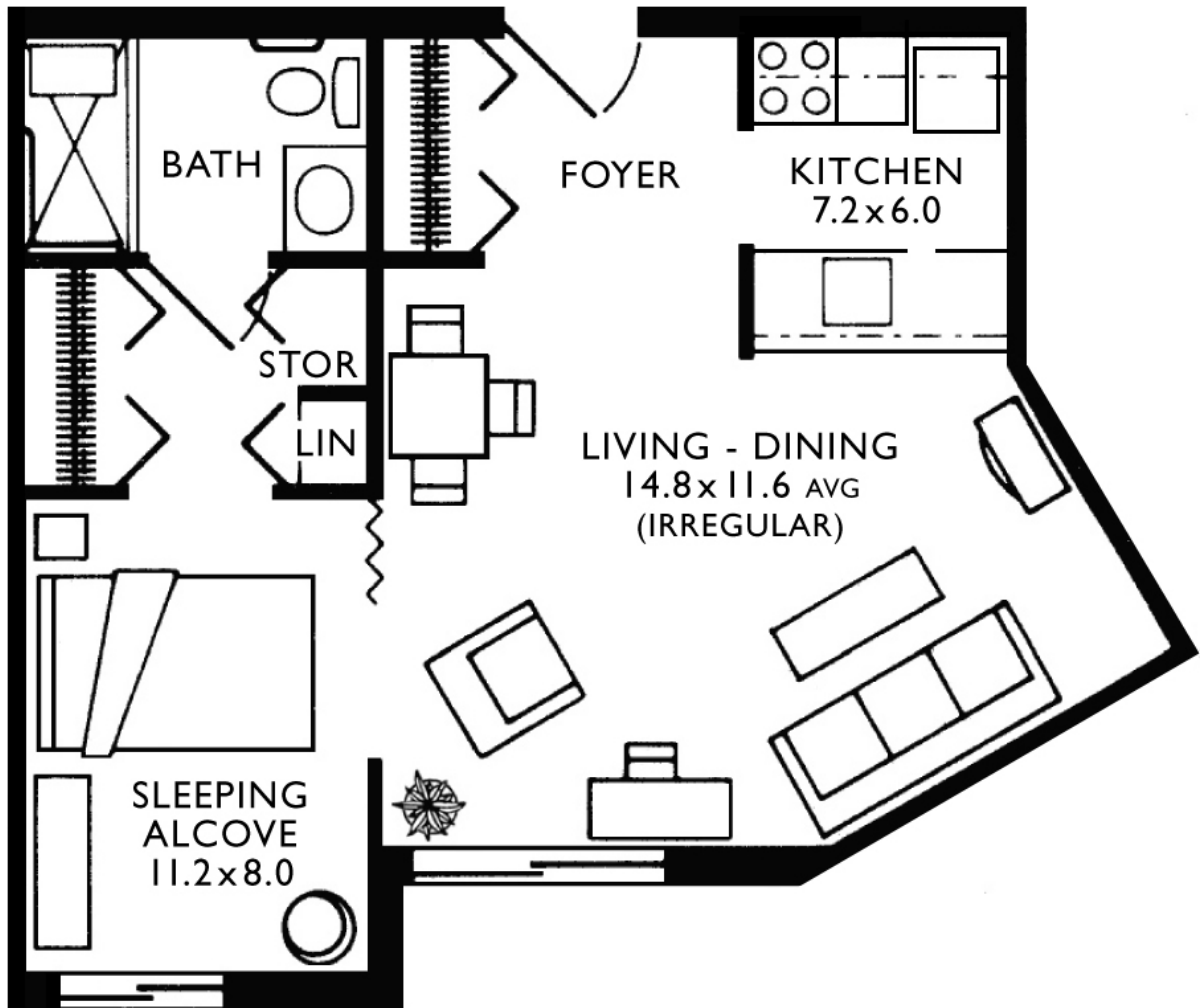


Coordinated Services Management, Inc. Professional Management of Retirement Communities since 1981.



The Shenandoah

Studio D • Shown With Furniture
Approximately 486 Square Feet



ASSISTED LIVING AND MEMORY CARE

Hometown Senior Living for Over 30 Years

703-494-3817 • PotomacPlace.com

2133 Montgomery Avenue • Woodbridge, VA

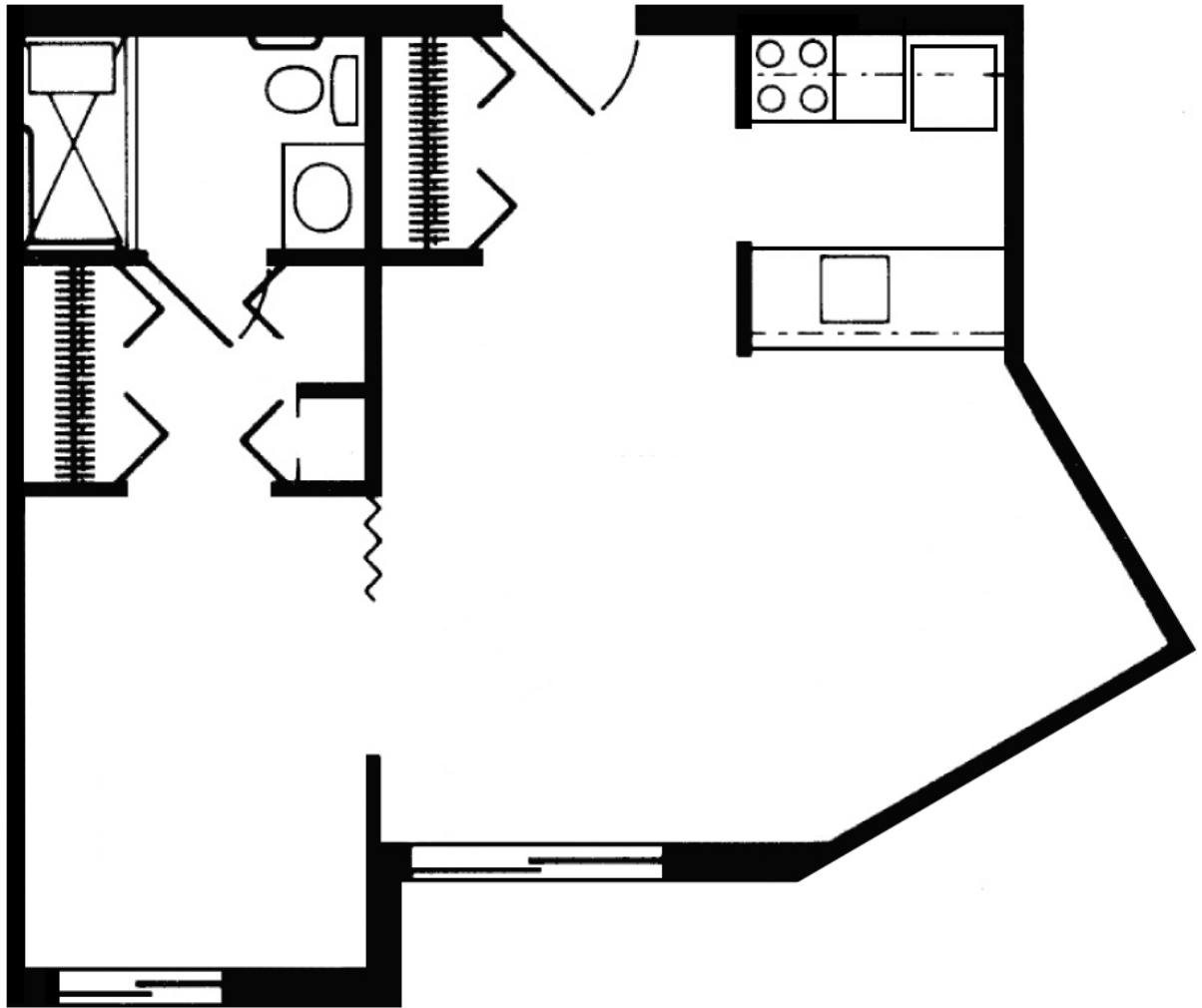


Coordinated Services Management, Inc. Professional Management of Retirement Communities since 1981.



The Shenandoah

Studio D • Shown Without Furniture
Approximately 486 Square Feet



ASSISTED LIVING AND MEMORY CARE

Hometown Senior Living for Over 30 Years

703-494-3817 • PotomacPlace.com

2133 Montgomery Avenue • Woodbridge, VA

 A Family Company

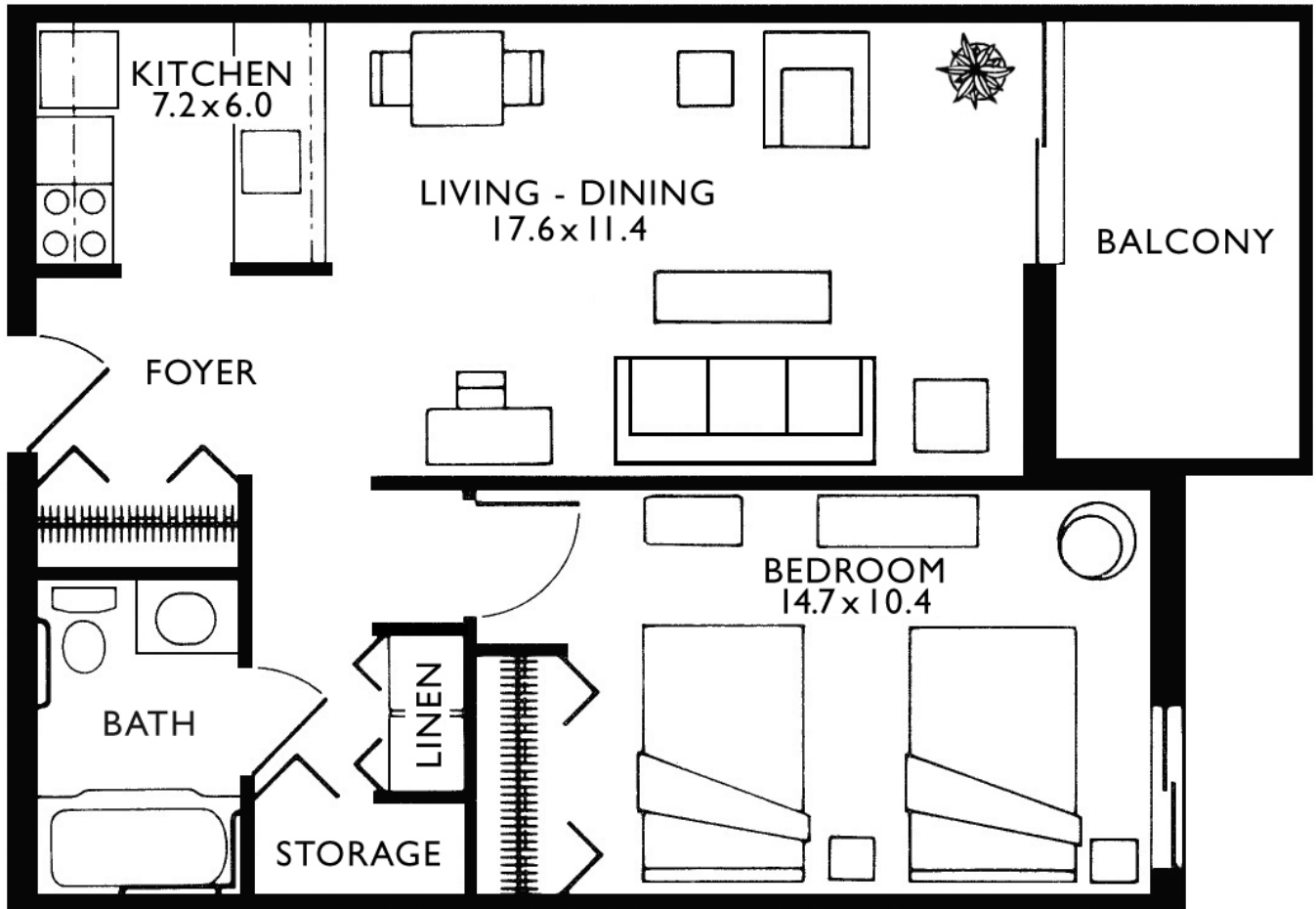


Coordinated Services Management, Inc. Professional Management of Retirement Communities since 1981.



The Potomac

One Bedroom with Balcony • Shown With Furniture
Approximately 581 Square Feet



ASSISTED LIVING AND MEMORY CARE

 A Family Company



Coordinated Services Management, Inc. Professional Management of Retirement Communities since 1981.

Hometown Senior Living for Over 30 Years

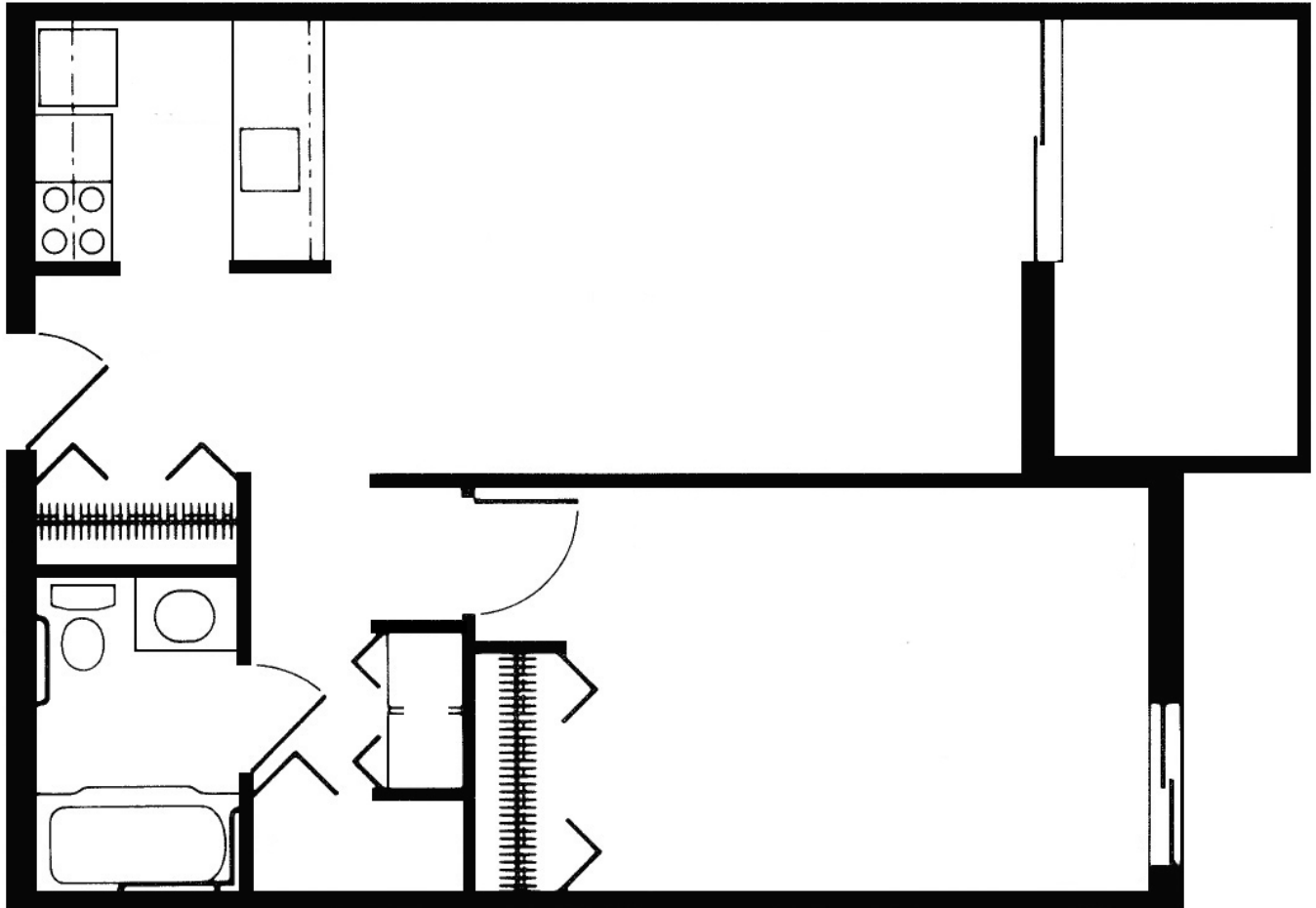
703-494-3817 • PotomacPlace.com

2133 Montgomery Avenue • Woodbridge, VA



The Potomac

One Bedroom with Balcony • Shown Without Furniture
Approximately 581 Square Feet



ASSISTED LIVING AND MEMORY CARE

 A Family Company



Coordinated Services Management, Inc. Professional Management of Retirement Communities since 1981.

Hometown Senior Living for Over 30 Years

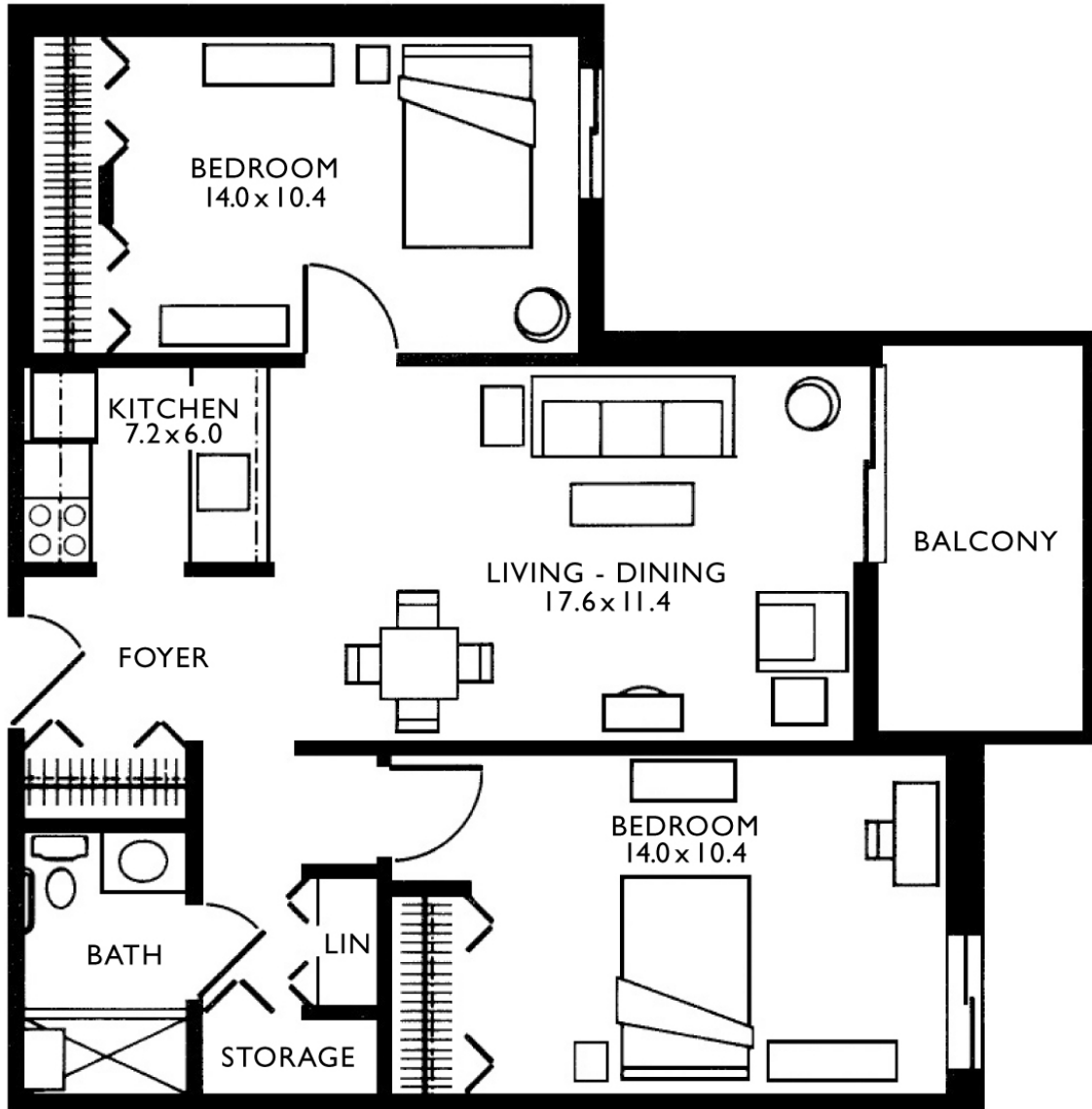
703-494-3817 • PotomacPlace.com

2133 Montgomery Avenue • Woodbridge, VA



Rappahannock

Two Bedroom with Balcony • Shown With Furniture
Approximately 750 Square Feet



ASSISTED LIVING AND MEMORY CARE

 A Family Company

Hometown Senior Living for Over 30 Years

703-494-3817 • PotomacPlace.com

2133 Montgomery Avenue • Woodbridge, VA

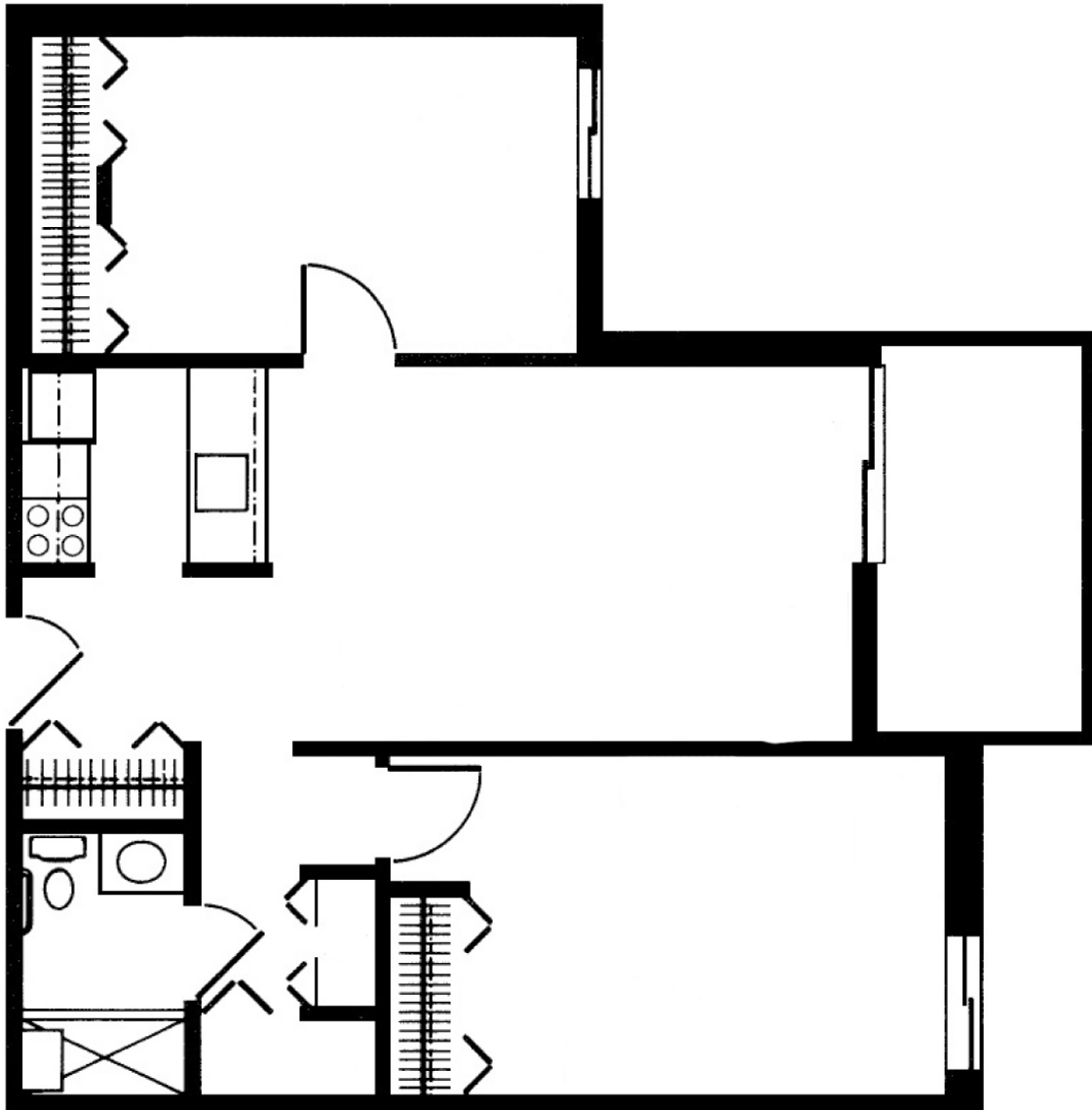


Coordinated Services Management, Inc. Professional Management of Retirement Communities since 1981.



Rappahannock

Two Bedroom with Balcony • Shown Without Furniture
Approximately 750 Square Feet



ASSISTED LIVING AND MEMORY CARE

 A Family Company



Coordinated Services Management, Inc. Professional Management of Retirement Communities since 1981.

Hometown Senior Living for Over 30 Years

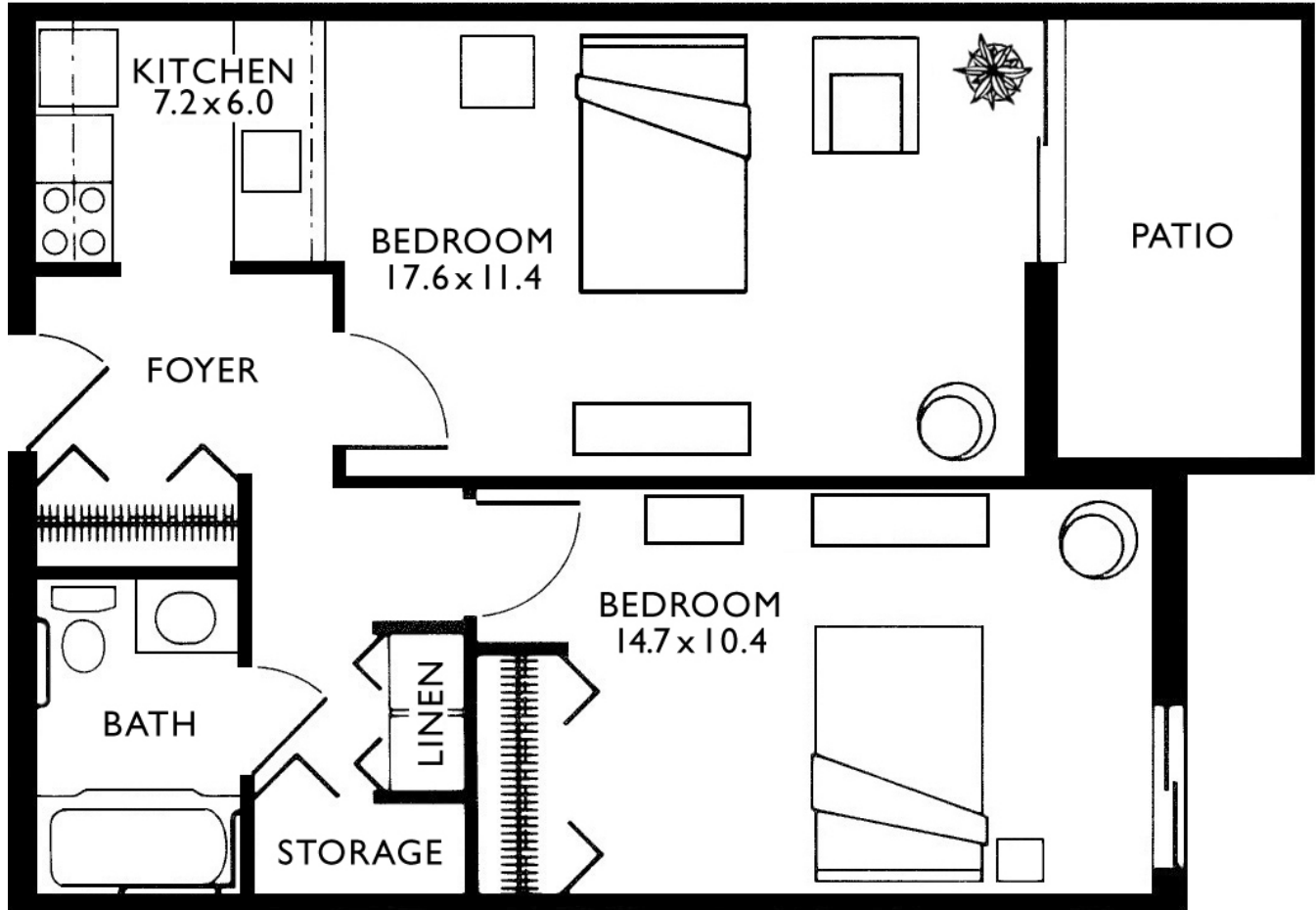
703-494-3817 • PotomacPlace.com

2133 Montgomery Avenue • Woodbridge, VA



The Aquia

Companion Two Bedroom • Shown With Furniture
Approximately 581 Square Feet



ASSISTED LIVING AND MEMORY CARE

 A Family Company



Coordinated Services Management, Inc. Professional Management of Retirement Communities since 1981.

Hometown Senior Living for Over 30 Years

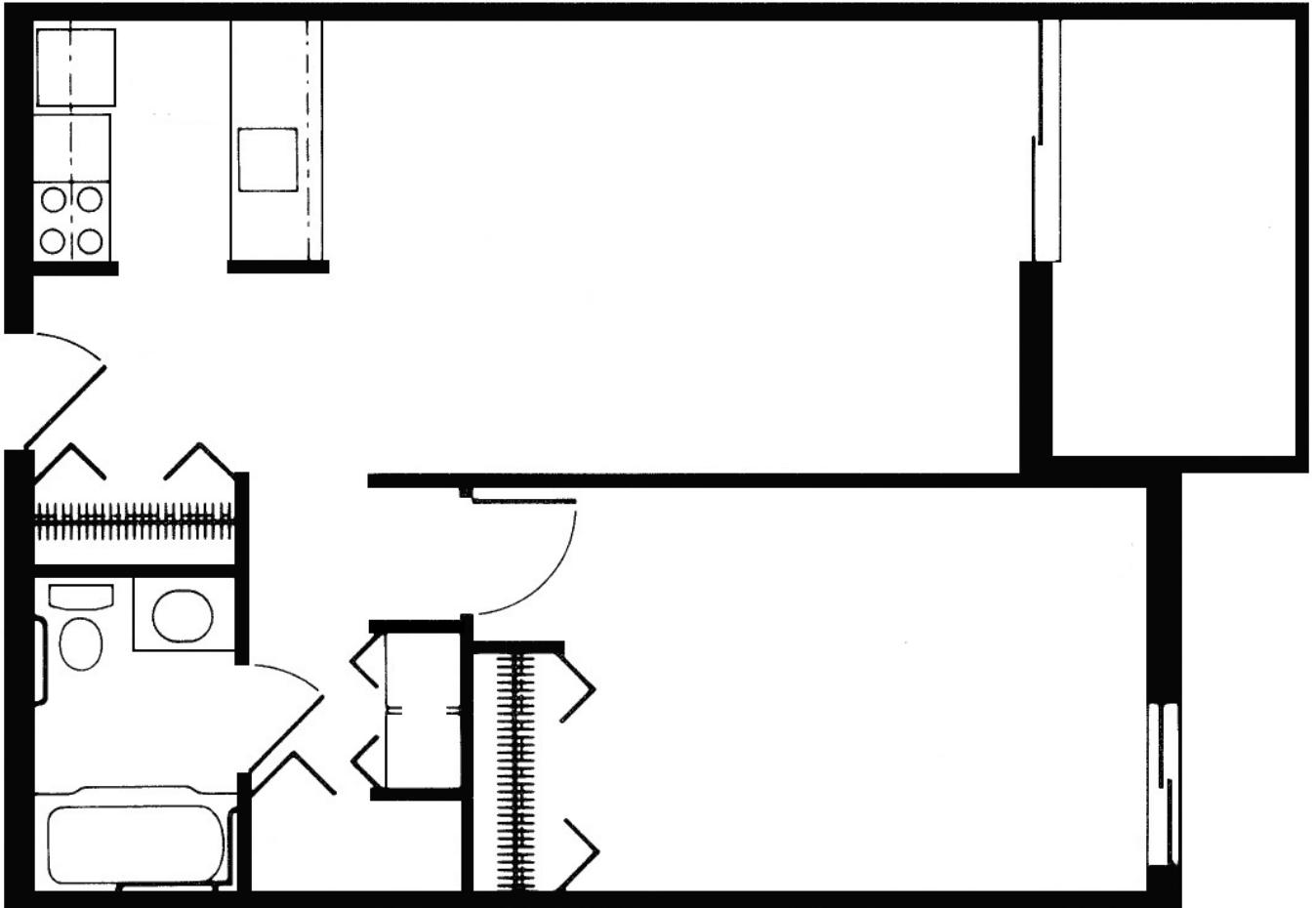
703-494-3817 • PotomacPlace.com

2133 Montgomery Avenue • Woodbridge, VA



The Aquia

Companion Two Bedroom • Shown Without Furniture
Approximately 581 Square Feet



ASSISTED LIVING AND MEMORY CARE

 A Family Company



Coordinated Services Management, Inc. Professional Management of Retirement Communities since 1981.

Hometown Senior Living for Over 30 Years

703-494-3817 • PotomacPlace.com

2133 Montgomery Avenue • Woodbridge, VA

